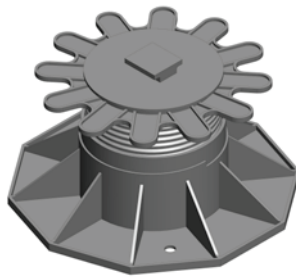


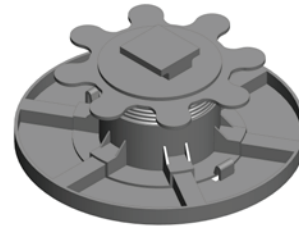
## Mounting using adjustable feet

Mounting on solid ground like:

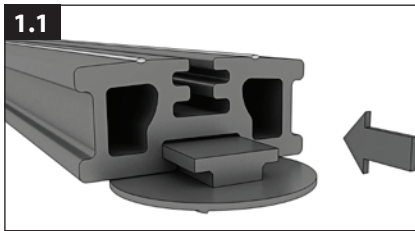
- crushed stone/gravel
- concrete, tiles, concrete stone
- roofing membranes with underlying non-woven material/protective matting



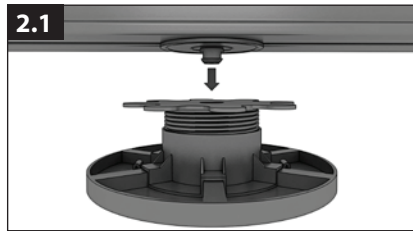
70-120 mm



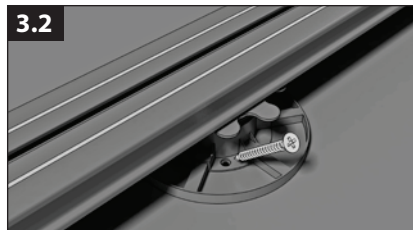
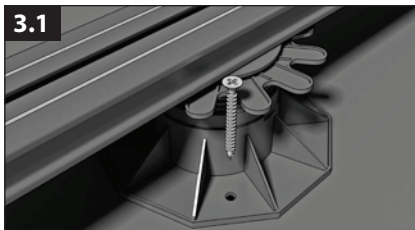
35-60 mm



Suitable for high sub-structure profile (35 x 80 mm) only.

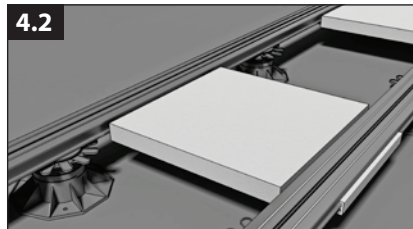
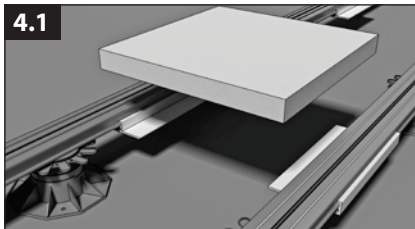


Mounting by inserting the adapter plate into the sub-structure profile and subsequent clipping into the adjustable foot. Centred distance of the feet: max. 65 cm



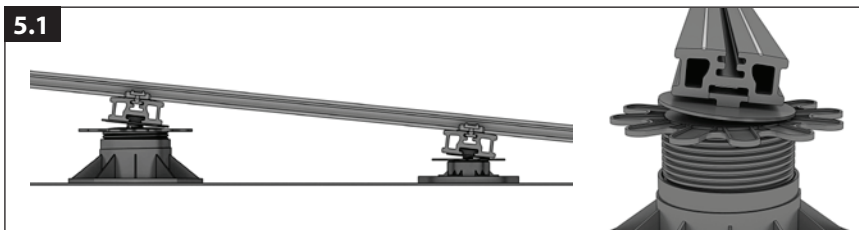
Outer fixation:

The feet can be fixed on concrete or wood with screws. 2 screws per foot are essential. Fix as close as possible to the core!

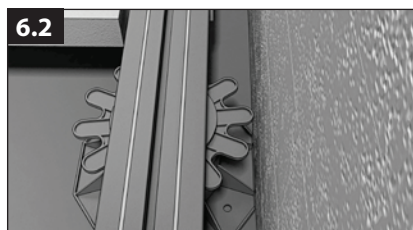
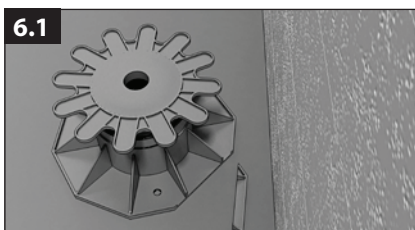


Using plate anchors between the adjustable feet and installation of concrete slabs (plate anchors according to plate thickness or always sizes of 50).

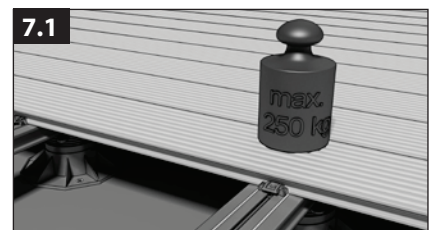
Mount the profiles at the corresponding distance.



Angular alignment: the foot balances angles of up to 5% in every direction.



In order to obey the maximum excess end of 5 cm allowed, the supporting disk must perhaps be shortened at the side.



When using adjustable feet, the lumped load is limited to 250 kg.